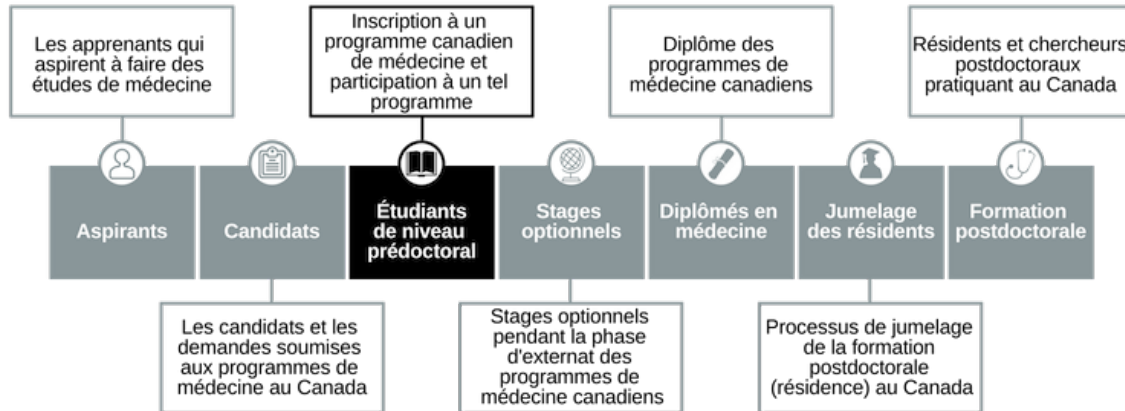


Statistiques relatives à l'enseignement médical au Canada 2018

Section G. L'étude de l'AFMC sur les inscriptions au niveau pré-doctoral (programmes de M.D.) – Description:

Fonds de données de l'AFMC - Cheminement des apprenants vers la pratique



L'étude de l'AFMC sur les inscriptions au niveau pré-doctoral fournit des renseignements sur le sexe, la province, le territoire ou le pays étranger de résidence, l'année d'études, le statut d'inscription (c.-à-d. nouvel étudiant, promu de l'année précédente, redoublant, en congé autorisé), le campus et le type de poste. L'étude s'appuie principalement sur le Sondage de l'AFMC sur les inscriptions, un sondage administré annuellement qui permet de recueillir des données démographiques et éducatives sur les étudiants inscrits à des programmes de doctorat en médecine (M.D.) dans les 17 facultés de médecine canadiennes. Les données du Sondage sur les inscriptions sont publiées annuellement dans la collection des SREMC depuis 1978 et les données à partir de 2003 sont disponibles dans notre base de données.

Section G. l'étude de l'AFMC sur les inscriptions au niveau pré-doctoral (programmes de M.D.) – Contenu de la Table

Tableau G-1	Inscriptions aux facultés de médecine canadiennes selon le sexe
Tableau G-2	Inscriptions aux facultés de médecine canadiennes selon l'année d'études
Tableau G-3	Nouvelles inscriptions aux facultés de médecine canadiennes selon la résidence permanente des étudiants inscrits
Tableau G-4	Type d'inscription des étudiants aux facultés de médecine canadiennes
Tableau G-5	Inscriptions aux facultés de médecine canadiennes selon le campus
Tableau G-6	Nouvelles inscriptions aux facultés de médecine canadiennes selon la faculté de médecine
Tableau G-7	Nouvelles inscriptions aux facultés de médecine canadiennes selon la situation juridique au Canada et le niveau d'admission
Tableau G-8	Inscriptions en première année aux facultés de médecine canadiennes selon le sexe

Tableau G-9	Inscriptions en première année aux facultés de médecine canadiennes selon la langue d'enseignement et le sexe
Tableau G-10	Inscriptions en première année aux facultés de médecine canadiennes selon la faculté de médecine
Tableau G-11	Inscriptions aux facultés de médecine canadiennes selon le sexe et le nombre d'années avant l'obtention du diplôme MD
Tableau G-12i	Inscriptions aux facultés de médecine canadiennes selon l'année d'études et le sexe
Tableau G-12ii	Répartition en % selon la faculté de médecine du nombre total d'inscriptions aux facultés de médecine canadiennes selon l'année d'études et le sexe
Tableau G-12iii	Répartition en % selon le sexe du nombre total d'inscriptions aux facultés de médecine canadiennes selon l'année d'études et le sexe
Tableau G-13	Inscriptions aux facultés de médecine canadiennes selon l'année d'études et le campus
Tableau G-14	Étudiants non canadiens inscrits aux facultés de médecine canadiennes selon l'année d'études et la situation juridique au Canada
Tableau G-15	Étudiants non canadiens inscrits aux facultés de médecine canadiennes selon la situation juridique au Canada et le pays de citoyenneté
Tableau G-16	Inscriptions aux facultés de médecine canadiennes selon la résidence permanente
Tableau G-17	Inscriptions pour la première fois en 1ère année aux facultés de médecine canadiennes selon la résidence permanente
Tableau G-18	Type d'inscriptions des étudiants aux facultés de médecine canadiennes selon la faculté de médecine
Tableau G-19	Type d'inscriptions des étudiants aux facultés de médecine canadiennes selon l'année d'études
Tableau G-20	Étudiants inscrits pour la première fois aux facultés de médecine canadiennes selon la faculté de médecine, l'année d'études et la situation juridique au Canada
Tableau G-21	Taux d'abandon (jusqu'en septembre 2017) des étudiants inscrits aux facultés de médecine canadiennes en 2016/17 selon la faculté de médecine et l'année d'études

Section G. L'Étude de l'AFMC sur les inscriptions au niveau pré-doctoral (programmes de M.D.) – Notes accompagnant les tableaux

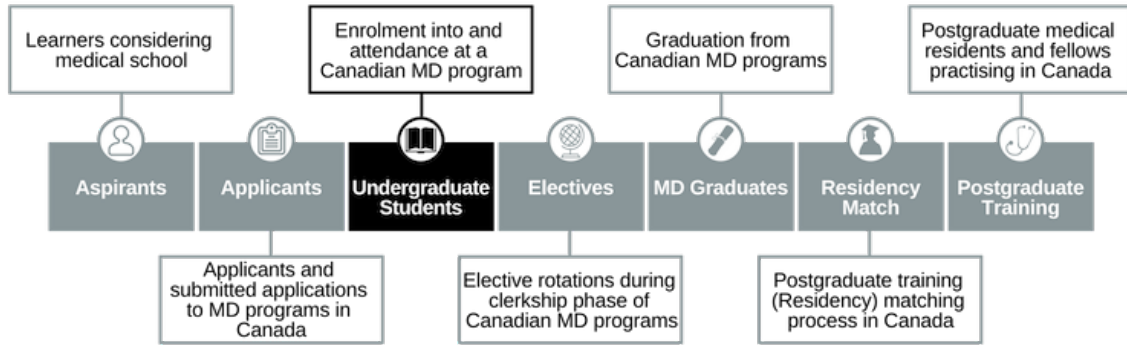
1. Les tableaux de la section G ont été renumérotés pour la publication de 2018 afin d'en faciliter la lecture. Veuillez consulter l'annexe D pour obtenir des renvois aux numéros de tableaux des publications de l'année précédente.
2. À l'Université de Montréal, les étudiants inscrits en première année (année préparatoire) du programme de formation pré-doctorale de cinq ans ont fait l'objet d'un va-et-vient dans plusieurs facultés de médecine au fil des ans. Pour toutes les années et facultés de médecine où de tels programmes étaient offerts, ils étaient systématiquement exclus de la série des inscriptions (dans la plupart des cas). Le même processus a été utilisé pour les étudiants inscrits au programme MED-P de l'Université McGill.
3. Pour toutes les facultés de médecine et les années au cours desquelles le doctorat en médecine n'a été accordé qu'à la fin d'une année de stage, les étudiants de l'année de stage ont été exclus de la série des inscriptions.

4. **1968-1969** : L'Université Laval est passée d'un programme de médecine de quatre ans à un programme de cinq ans. Laval a admis une classe complète dans les programmes de quatre et cinq ans. L'Université de la Saskatchewan a également lancé son programme de cinq ans. Elle a admis une moitié de son effectif habituel d'étudiants dans le nouveau programme de quatre ans et l'autre dans le nouveau programme de cinq ans.
5. **1969-1970** : L'Université de Montréal a lancé un programme de cinq ans. Elle a admis deux classes de première année, l'une dans le programme de quatre ans et l'autre dans le programme de cinq ans. L'Université Laval et l'Université de la Saskatchewan n'ont admis des étudiants que dans leurs programmes de cinq ans; elles avaient toutes deux classes de deuxième année, une classe de deuxième année dont les étudiants étaient à trois ans de l'obtention de leur diplôme et une classe de deuxième année dont les étudiants étaient à quatre ans de l'obtention de leur diplôme. L'Université McMaster et l'Université Mémorial de Terre-Neuve ont chacune admis leur première promotion d'étudiants en médecine.
6. **1970-1971** : L'Université Laval est revenue à un programme de médecine de quatre ans pour tous ses étudiants en médecine. Les étudiants nouvellement admis au programme de quatre ans ainsi que ceux qui entamaient la deuxième année du programme de cinq ans (admis l'année précédente) étaient à quatre ans de l'obtention de leur diplôme. De plus, la classe de troisième année consistait en une fusion des étudiants qui étaient à trois ans de l'obtention de leur diplôme dans le programme de cinq ans et à deux ans de l'obtention de leur diplôme dans le programme de quatre ans. L'Université de Calgary a admis sa première promotion d'étudiants en médecine.
7. **1987-1988 & 1988-1989** : L'Université de la Saskatchewan est passée d'un programme de cinq ans à un programme de quatre ans et n'a admis aucun étudiant en première année. En 1988-1989, des étudiants ont été admis en première année d'un nouveau programme de quatre ans.
8. **1992-1993** : L'Université de Montréal est passée d'un programme de cinq ans à un programme de quatre ans et n'a admis aucun étudiant en première année. Elle a cependant admis des étudiants en « année préparatoire ».
9. **1996** : Une nouvelle catégorie d'étudiants étrangers a commencé le programme de médecine au Canada. Il s'agit d'étudiants admis en vertu d'accords avec des gouvernements étrangers ou des établissements d'enseignement étrangers. Ces étudiants paient presque le coût total de leur formation médicale.
10. **1997-1998** : L'Université Western Ontario n'a pas fourni de données complètes. Pour cette raison, tous les chiffres relatifs à l'UWO et tous les sous-totaux et totaux sont estimés.
11. **2005-2006** : L'École de médecine du Nord de l'Ontario a admis sa première promotion d'étudiants en médecine en première année.

Canadian Medical Education Statistics 2018

Section G. The AFMC Undergraduate Medical Education Enrolment (MD Program) Study – Description:

AFMC Data Holdings - *Learners Pathway to Practice*



The AFMC Undergraduate Medical Enrolment Study provides information on the gender, province/territory/foreign country of residence, year of study, registration status (i.e. new student, promoted from previous year, repeating same year of study, on leave of absence), campus, and position type. The study is primarily informed by the annual AFMC Enrolment Survey that collects demographic and educational information about the students registered in Doctor of Medicine (MD) programs at the seventeen Canadian faculties of medicine. The Enrolment Survey data have been published in the CMES collection annually since 1978 with data from 2003 onward available in our database.

Section G. The AFMC Undergraduate Medical Education Enrolment (MD Programs) Study – Table Contents

Table G-1	Enrolment in Canadian Faculties of Medicine by Sex
Table G-2	Enrolment in Canadian Faculties of Medicine by Year of Study
Table G-3	First-Time Enrolment in Canadian Faculties of Medicine by Permanent Residence of Enrolled Students
Table G-4	Enrolment Status of Students in Canadian Faculties of Medicine
Table G-5	Enrolment in Canadian Faculties of Medicine by Campus
Table G-6	First Time Enrolment in Canadian Faculties of Medicine by Faculty of Medicine
Table G-7	First Time Enrolment in Canadian Faculties of Medicine by Legal Status in Canada and Level of Entry
Table G-8	First Year Enrolment in Canadian Faculties of Medicine by Sex
Table G-9	First Year Enrolment in Canadian Faculties of Medicine by Language of Instruction and Sex
Table G-10	First Year Enrolment in Canadian Faculties of Medicine by Faculty of Medicine
Table G-11	Enrolment in Canadian Faculties of Medicine by Sex and Years to Graduation
Table G-12i	Enrolment in Canadian Faculties of Medicine by Year of Study and Sex
Table G-12ii	% Distribution by Faculty of Medicine of Total Enrolment in Canadian Faculties of Medicine by Year of Study and Sex

Table G-12ii	% Distribution by Sex of Total Enrolment in Canadian Faculties of Medicine by Year of Study and Sex
Table G-13	Enrolment in Canadian Faculties of Medicine by Year of Study and Campus Location
Table G-14	Non-Canadians Enrolled in Canadian Faculties of Medicine by Year of Study and Legal Status in Canada
Table G-15	Non-Canadians Enrolled in Canadian Faculties of Medicine by Legal Status in Canada and Country of Citizenship
Table G-16	Enrolment in Canadian Faculties of Medicine by Residence of province
Table G-17	Enrolment in Year 1 for the First Time in Canadian Faculties of Medicine by Residence of Province
Table G-18	Enrolment Status of Students in Canadian Faculties of Medicine by Faculty of Medicine
Table G-19	Enrolment Status of Students in Canadian Faculties of Medicine by Year of Study
Table G-20	First Time Enrolment Status of Students in Canadian Faculties of Medicine by Faculty of Medicine, Year of Study and Legal Status in Canada
Table G-21	Attrition (by September 2017) of Students Enrolled in Canadian Faculties of Medicine in 2016/17 by Faculty of Medicine and Year of Study

Section G. Section G. The AFMC Undergraduate Medical Education Enrolment (MD Programs) Study – Table Notes

1. Tables in Section G have been renumbered for 2018's publication for better readability. Please see Appendix D for Table number cross reference from prior year publications.
2. At the *Université de Montréal*, students enrolled in the first year of the five-year *Année Préparatoire* pre-medical program were phased in and out of several medical faculties over the years. For all years and medical faculties in which such programs operated, they were systematically excluded from the enrolment series (in most cases). The same process was used for students enrolled in the MED-P program at McGill University.
3. For all medical faculties and years in which the MD was granted only upon completion of an internship year, the students in the internship year were excluded from the enrolment series.
4. **1968/69:** *Université Laval* changed from a four year MD program to a five year program. Laval admitted a complete class into both the four and five year programs. University of Saskatchewan also introduced its five year program. It admitted half its usual complement of students into the four year and half into the new five year program.
5. **1969/70:** *Université de Montréal* introduced a five year program. It admitted two first year classes, one into the four year and one into the five year program. *Université Laval* and the University of Saskatchewan admitted only to the five year programs; they both had two second year classes, one second year class three years from graduation and one second year class four years from graduation. McMaster University and Memorial University each admitted its first class of medical students.

6. **1970/71:** *Université Laval* changed back to a four year medical program for all its medical students. The newly admitted students to the four year program as well as those entering the second year of the five year program (admitted the previous year) were four years from graduation. Also, the third year class consisted of an amalgamation of those three years from graduation in the five year program and two years from graduation in the four year program. University of Calgary admitted its first class of medical students.
7. **1987/88 & 1988/89:** The University of Saskatchewan changed from a five year program to a four year program and did not admit any students into first year. In 1988/89 students were admitted into the first year of a new four year program.
8. **1992/93:** *Université de Montréal* changed from a five year program to a four year program and did not admit any students into first year. It did however; admit students into a preparatory year: "année préparatoire".
9. **1996:** A new category of foreign student commenced the MD program in Canada. These are students admitted under agreements with foreign governments or foreign educational institutions. These students pay close to full cost for their medical education.
10. **1997/98:** The University of Western Ontario failed to report complete data. For this reason, all numbers relating to UWO and any subtotals and totals are estimated.
11. **2005/06:** Northern Ontario School of Medicine admitted its first class of medical students into year 1.

Table/Tableau G-1
Enrolment in Canadian Faculties of Medicine by Sex
1968/69 - 2017/18

Inscriptions aux facultés de médecine canadiennes selon le sexe

Year Année	Men Hommes	Women Femmes	Total	% Women % Femmes	Year Année	Men Hommes	Women Femmes	Total	% Women % Femmes
1968/69	4,012	669	4,681	14.3	1993/94	3,616	3,300	6,916	47.7
1969/70	4,259	795	5,054	15.7	1994/95	3,496	3,324	6,820	48.7
1970/71	4,457	967	5,424	17.8	1995/96	3,276	3,358	6,634	50.6
1971/72	4,690	1,162	5,852	19.9	1996/97	3,189	3,262	6,451	50.6
1972/73	4,936	1,389	6,325	22.0	1997/98	3,189	3,246	6,435	50.4
1973/74	5,127	1,632	6,759	24.1	1998/99	3,139	3,253	6,392	50.9
1974/75	5,181	1,831	7,012	26.1	1999/2000	3,155	3,233	6,388	50.6
1975/76	5,167	2,042	7,209	28.3	2000/01	3,151	3,408	6,559	52.0
1976/77	5,065	2,197	7,262	30.3	2001/02	3,153	3,784	6,937	54.5
1977/78	5,002	2,306	7,308	31.6	2002/03	3,216	4,176	7,392	56.5
1978/79	4,877	2,432	7,309	33.3	2003/04	3,276	4,532	7,808	58.0
1979/80	4,810	2,537	7,347	34.5	2004/05	3,367	4,869	8,236	59.1
1980/81	4,710	2,677	7,387	36.2	2005/06	3,605	5,082	8,687	58.5
1981/82	4,649	2,787	7,436	37.5	2006/07	3,828	5,323	9,151	58.2
1982/83	4,553	2,939	7,492	39.2	2007/08	4,052	5,588	9,640	58.0
1983/84	4,433	3,051	7,484	40.8	2008/09	4,254	5,894	10,148	58.1
1984/85	4,349	3,124	7,473	41.8	2009/10	4,427	6,091	10,518	57.9
1985/86	4,219	3,131	7,350	42.6	2010/11	4,592	6,261	10,853	57.7
1986/87	4,177	3,124	7,301	42.8	2011/12	4,802	6,340	11,142	56.9
1987/88	4,059	3,147	7,206	43.7	2012/13	4,990	6,385	11,375	56.1
1988/89	3,961	3,163	7,124	44.4	2013/14	5,096	6,469	11,565	55.9
1989/90	3,960	3,112	7,072	44.0	2014/15	5,144	6,466	11,610	55.7
1990/91	3,956	3,154	7,110	44.4	2015/16	5,242	6,443	11,685	55.1
1991/92	3,959	3,169	7,128	44.5	2016/17	5,149	6,549	11,698	56.0
1992/93	3,817	3,224	7,041	45.8	2017/18	5,173	6,564	11,737	55.9

Note: Includes students enrolled in *année préparatoire* at the Université de Montréal

Table/Tableau G-2
Enrolment in Canadian Faculties of Medicine by Year of Study
1968/69 - 2017/18

Inscriptions aux facultés de médecine canadiennes selon l'année d'études

Year/ Année	No. of Medical Faculties	Year of Study / L'Année d'études							Total
		Prep Year/Année préparatoire	1st 1ère	2nd 2e	3rd 3e	4th 4e	5th 5e		
1968/69	13	0	1,377	1,179	1,099	1,026	0	4,681	
1969/70	15	0	1,463	1,338	1,165	1,088	0	5,054	
1970/71	16	0	1,452	1,492	1,316	1,164	0	5,424	
1971/72	16	0	1,601	1,483	1,474	1,294	0	5,852	
1972/73	16	0	1,763	1,625	1,472	1,292	173	6,325	
1973/74	16	0	1,773	1,789	1,617	1,389	191	6,759	
1974/75	16	0	1,779	1,775	1,765	1,478	215	7,012	
1975/76	16	0	1,807	1,795	1,751	1,613	243	7,209	
1976/77	16	0	1,819	1,822	1,781	1,586	254	7,262	
1977/78	16	0	1,826	1,809	1,797	1,611	265	7,308	
1978/79	16	0	1,829	1,798	1,796	1,641	245	7,309	
1979/80	16	0	1,854	1,839	1,775	1,612	267	7,347	
1980/81	16	0	1,887	1,837	1,813	1,578	272	7,387	
1981/82	16	0	1,881	1,858	1,834	1,613	250	7,436	
1982/83	16	0	1,882	1,868	1,840	1,646	256	7,492	
1983/84	16	0	1,887	1,826	1,881	1,634	256	7,484	
1984/85	16	0	1,858	1,858	1,816	1,679	262	7,473	
1985/86	16	0	1,812	1,871	1,810	1,601	256	7,350	
1986/87	16	0	1,803	1,826	1,812	1,618	242	7,301	
1987/88	16	0	1,744	1,828	1,765	1,625	244	7,206	
1988/89	16	0	1,786	1,786	1,765	1,556	231	7,124	
1989/90	16	0	1,780	1,810	1,713	1,556	213	7,072	
1990/91	16	0	1,791	1,838	1,753	1,514	214	7,110	
1991/92	16	0	1,775	1,859	1,743	1,582	169	7,128	
1992/93	16	145	1,604	1,826	1,762	1,544	160	7,041	
1993/94	16	101	1,683	1,690	1,719	1,557	166	6,916	
1994/95	16	106	1,651	1,769	1,561	1,561	172	6,820	
1995/96	16	110	1,613	1,723	1,656	1,371	161	6,634	
1996/97	16	95	1,598	1,724	1,590	1,444	0	6,451	
1997/98	16	91	1,577	1,682	1,643	1,442	0	6,435	
1998/99	16	97	1,581	1,674	1,595	1,445	0	6,392	
1999/2000	16	100	1,634	1,660	1,586	1,408	0	6,388	
2000/01	16	110	1,763	1,727	1,584	1,375	0	6,559	
2001/02	16	123	1,921	1,860	1,656	1,377	0	6,937	
2002/03	16	140	2,028	2,007	1,750	1,467	0	7,392	
2003/04	16	160	2,096	2,116	1,908	1,528	0	7,808	
2004/05	16	194	2,193	2,205	1,989	1,655	0	8,236	
2005/06	17	188	2,380	2,305	2,086	1,728	0	8,687	
2006/07	17	198	2,460	2,524	2,152	1,817	0	9,151	
2007/08	17	202	2,569	2,615	2,368	1,886	0	9,640	
2008/09	17	210	2,660	2,717	2,477	2,084	0	10,148	
2009/10	17	212	2,742	2,826	2,564	2,174	0	10,518	
2010/11	17	219	2,829	2,898	2,681	2,226	0	10,853	
2011/12	17	221	2,902	2,973	2,717	2,329	0	11,142	
2012/13	17	212	2,919	3,060	2,851	2,333	0	11,375	
2013/14	17	218	2,915	3,102	2,859	2,471	0	11,565	
2014/15	17	212	2,921	3,094	2,922	2,461	0	11,610	
2015/16	17	216	2,919	3,124	2,902	2,524	0	11,685	
2016/17	17	217	2,915	3,150	2,899	2,517	0	11,698	
2017/18	17	214	2,916	3,139	2,928	2,540	0	11,737	

Note: Includes students enrolled in *année préparatoire* at the Université de Montréal

Table/Tableau G-3
First-Time Enrolment in Canadian Faculties of Medicine by Permanent Residence of Enrolled Students
2008/09 - 2017/18

Nouvelles inscriptions aux facultés de médecine canadiennes selon la résidence permanente des étudiants inscrits

Residence Résidence	Year of First Time Enrolment * / L'année de la première inscription *										
	2008/09	2009/10	2010/11	2011/12	2012/13	2013/14	2014/15	2015/16	2016/17	2017/18	
Newfoundland & Lab.	49	53	50	50	49	65	64	61	66	68	
Prince Edward Island	12	15	9	13	15	14	10	13	11	11	
Nova Scotia	88	88	87	81	74	84	87	87	88	91	
New Brunswick	66	70	84	79	73	74	75	76	79	84	
Québec	808	801	868	893	888	881	897	894	891	854	
Ontario	865	851	913	920	943	956	923	942	914	917	
Manitoba	110	113	116	114	115	116	109	110	122	114	
Saskatchewan	79	88	81	96	97	97	99	87	87	85	
Alberta	270	330	331	345	352	305	303	315	308	316	
British Columbia	296	296	270	267	277	283	319	309	309	323	
Yukon Territory	1	2	1	4	4	2	5	2	2	4	
NW Terr. / Nunavut	4	4	3	6	1	3	1	3	3	4	
<i>Subtotal, Canada</i>	<i>2,648</i>	<i>2,711</i>	<i>2,813</i>	<i>2,868</i>	<i>2,888</i>	<i>2,880</i>	<i>2,892</i>	<i>2,899</i>	<i>2,880</i>	<i>2,871</i>	
USA	8	12	7	13	7	9	5	6	4	5	
Other foreign	21	16	19	14	9	13	10	9	17	13	
<i>Subtotal, foreign</i>	<i>29</i>	<i>28</i>	<i>26</i>	<i>27</i>	<i>16</i>	<i>22</i>	<i>15</i>	<i>15</i>	<i>21</i>	<i>18</i>	
Total	2,677	2,739	2,839	2,895	2,904	2,902	2,907	2,914	2,901	2,889	
Year 1**	Canada	2,636	2,701	2,801	2,857	2,874	2,865	2,875	2,886	2,867	2859
	Foreign	18	18	16	23	12	19	9	10	16	13
Advanced Standing†	Canada	12	10	12	11	14	14	17	13	13	12
	Foreign	11	10	10	4	4	3	6	5	5	5

* First time enrolment excludes Med-P program at McGill University, repeaters, returnees from leaves of absence, and transfers from one faculty of medicine in Canada to another.

** First time students in année préparatoire at Université de Montréal are included; students promoted from année préparatoire are not included.

† Admission with advanced standing (above year 1) is included.

Table/Tableau G-4
Enrolment Status of Students in Canadian Faculties of Medicine
1999/2000 - 2017/18

Type d'inscription des étudiants aux facultés de médecine canadiennes

Year	Enrolled 1st Time in this Faculty				Continuing Students	Repeaters (Same year of study as previous year)			Readmitted after leave of absence	Total
	Année préparatoire	First year	2nd and Higher Yr. ²	Subtotal, First-time		Required	Student option ¹	Subtotal, repeaters		
1999/2000	98	1,530	34	1,662	4,547	26	99	125	54	6,388
2000/01	106	1,656	28	1,790	4,560	37	92	129	72	6,559
2001/02	122	1,794	26	1,942	4,776	40	105	145	74	6,937
2002/03	137	1,884	24	2,045	5,117	49	117	166	64	7,392
2003/04	158	1,934	26	2,118	5,444	66	114	180	66	7,808
2004/05	190	2,020	20	2,230	5,766	40	129	169	71	8,236
2005/06	188	2,164	18	2,370	6,054	34	135	169	94	8,687
2006/07	198	2,256	17	2,471	6,409	34	158	192	79	9,151
2007/08	201	2,353	17	2,571	6,755	42	163	205	109	9,640
2008/09	205	2,449	23	2,677	7,163	43	170	213	95	10,148
2009/10	208	2,513	20	2,741	7,446	44	186	230	101	10,518
2010/11	212	2,605	22	2,839	7,686	45	195	240	88	10,853
2011/12	216	2,664	15	2,895	7,886	25	226	251	110	11,142
2012/13	210	2,676	18	2,904	8,045	45	224	269	155	11,375
2013/14	213	2,671	17	2,901	8,247	56	246	302	115	11,565
2014/15	209	2,675	23	2,907	8,266	54	247	301	136	11,610
2015/16	214	2,682	18	2,914	8,349	40	222	262	160	11,685
2016/17	215	2,668	18	2,901	8,312	61	271	332	153	11,698
2017/18	211	2,661	17	2,889	8,304	94	297	391	151	11,735

1 The option to prolong study is now available to students in some faculties of medicine. For this reason the category "repeaters" has been split to distinguish those who are required by the faculty of medicine to repeat a year from those who have requested a prolonged period of study.

2 A small number of the students admitted with advanced standing each year are transfers from one Canadian faculty of medicine to another (at most 2 per year).

Table/Tableau G-5

**Enrolment in Canadian Faculties of Medicine by Campus
2009/10 - 2017/18**

Inscriptions aux facultés de médecine canadiennes selon le campus

Faculty of Medicine	Campus	2009/10	2010/11	2011/12	2012/13	2013/14	2014/15	2015/16	2016/17	2017/18
Memorial University of Newfoundland	Main	258	262	262	266	274	291	309	320	320
	Satellite	0	0	0	0	0	0	0	0	0
	Total	258	262	262	266	274	291	309	320	320
Dalhousie University	Main	414	391	385	365	340	339	337	327	330
	Satellite	0	30	60	90	119	121	120	118	120
	Total	414	421	445	455	459	460	457	445	450
Laval Université	Main	991	1,017	1,036	1,057	1,084	1,091	1,116	1,101	1,114
	Satellite	0	0	0	0	0	0	0	0	0
	Total	991	1,017	1,036	1,057	1,084	1,091	1,116	1,101	1,114
Université de Sherbrooke	Main	587	596	587	594	593	589	587	585	579
	Satellite	190	204	217	231	235	230	232	239	240
	Total	777	800	804	825	828	819	819	824	819
Université de Montréal	Main	1,096	1,137	1,143	1,149	1,182	1,172	1,194	1,211	1,219
	Satellite	156	170	188	196	208	212	208	203	202
	Total	1,252	1,307	1,331	1,345	1,390	1,384	1,402	1,414	1,421
McGill University	Main	698	689	707	723	733	750	752	739	731
	Satellite	0	0	0	0	0	0	0	0	0
	Total	698	689	707	723	733	750	752	739	731
University of Ottawa	Main	615	634	636	641	654	660	662	668	675
	Satellite	0	0	0	0	0	0	0	0	0
	Total	615	634	636	641	654	660	662	668	675
Queen's University	Main	404	402	406	406	407	400	402	403	399
	Satellite	0	0	0	0	0	0	0	0	0
	Total	404	402	406	406	407	400	402	403	399
University of Toronto	Main	902	922	906	893	864	821	830	840	837
	Satellite	0	0	54	107	158	213	216	217	224
	Total	902	922	960	1,000	1,022	1,034	1,046	1,057	1,061
McMaster University	Main	444	449	451	457	450	449	453	448	458
	Satellite	97	140	159	165	166	170	166	169	169
	Total	541	589	610	622	616	619	619	617	627
Western University	Main	538	533	519	523	529	529	532	532	543
	Satellite	53	91	129	142	151	151	151	152	154
	Total	591	624	648	665	680	680	683	684	697
Northern Ontario School of Medicine	Main	225	236	241	248	256	260	258	145	146
	Satellite	0	0	0	0	0	0	0	112	112
	Total	225	236	241	248	256	260	258	257	258
University of Manitoba	Main	426	424	437	441	448	444	449	452	449
	Satellite	0	0	0	0	0	0	0	0	0
	Total	426	424	437	441	448	444	449	452	449
University of Saskatchewan	Main	279	285	291	282	276	274	283	290	290
	Satellite	20	41	47	73	95	110	113	119	115
	Total	299	326	338	355	371	384	396	409	405
University of Alberta	Main	630	655	679	697	672	658	660	652	644
	Satellite	0	0	0	0	0	0	0	0	0
	Total	630	655	679	697	672	658	660	652	644
University of Calgary	Main	486	509	518	519	522	501	486	492	487
	Satellite	0	0	0	0	0	0	0	0	0
	Total	486	509	518	519	522	501	486	492	487
University of British Columbia	Main	768	783	792	789	796	793	786	784	787
	Satellite	238	253	292	321	353	382	383	380	393
	Total	1,006	1,036	1,084	1,110	1,149	1,175	1,169	1,164	1,180
Canada	Main	9,761	9,924	9,996	10,050	10,080	10,021	10,096	9,989	10,008
	Satellite	754	929	1,146	1,325	1,485	1,589	1,589	1,709	1,729
	Total	10,515	10,853	11,142	11,375	11,565	11,610	11,685	11,698	11,737
Index: 2009/10=100	Main	100	102	102	103	103	103	103	102	103
	Satellite	100	123	152	176	197	211	211	227	229
	Total	100	103	106	108	110	110	111	111	112

Table/Tableau G-6

First Time Enrolment in Canadian Faculties of Medicine by Faculty of Medicine
2008/09 - 2017/18

Nouvelles inscriptions aux facultés de médecine canadiennes selon la faculté de médecine

Faculty of Medicine	2008/09	2009/10	2010/11	2011/12	2012/13	2013/14	2014/15	2015/16	2016/17	2017/18
First Time, First Year										
Memorial University of Newfoundland	64	64	64	64	64	80	80	80	80	80
Dalhousie University	102	102	109	112	111	110	109	110	109	109
Laval Université	218	215	225	225	226	228	230	230	229	226
Université de Sherbrooke	200	195	210	212	207	201	206	205	206	203
Université de Montréal *	261	261	286	292	293	293	295	293	294	293
McGill University	175	176	174	185	186	183	186	189	180	180
Subtotal, Québec	854	847	895	914	912	905	917	917	909	902
University of Ottawa	156	154	164	164	163	164	164	164	164	164
Queen's University	100	100	100	100	100	101	100	100	100	100
University of Toronto	224	224	250	259	267	259	260	260	259	260
McMaster University	183	196	206	206	203	207	206	206	203	203
Western University	147	159	171	169	170	168	170	170	171	170
Northern Ontario School of Medicine	58	56	64	64	64	64	64	64	64	64
Subtotal, Ontario	868	889	955	962	967	963	964	964	961	961
University of Manitoba	110	110	110	110	110	110	109	110	110	110
University of Saskatchewan	84	84	84	84	100	99	100	100	100	100
University of Alberta	155	188	167	166	167	162	162	162	162	162
University of Calgary	148	175	168	174	170	157	158	158	160	160
Subtotal, Alberta	303	363	335	340	337	319	320	320	322	322
University of British Columbia	256	255	256	288	287	288	288	288	288	288
Total, First time, First year	2,641	2,714	2,808	2,874	2,888	2,874	2,887	2,889	2,879	2,872
First time, Advanced Standing	23	20	22	15	18	17	23	18	18	17
Total, New Students	2,664	2,734	2,830	2,889	2,906	2,891	2,910	2,907	2,897	2,889

2016/17 2017/18

* For U. de Montréal,
the figures given include:

students promoted to first year from *année préparatoire*:
students admitted directly into year 1:

211 211
83 82

Excludes repeaters, returnees from leaves of absence and students who transferred from one Canadian faculty of medicine to another.

Table/Tableau G-7

First Time Enrolment in Canadian Faculties of Medicine by Legal Status in Canada and Level of Entry

1994/95 - 2017/18

Nouvelles inscriptions aux facultés de médecine canadiennes selon la situation juridique au Canada et le niveau d'admission

Year	First Time, Year 1			New Advanced Standing			Total, First Time		
	Canadian Citizens and Permanent Residents	Foreign Students	Total	Canadian Citizens and Permanent Residents	Foreign Students	Total	Canadian Citizens and Permanent Residents	Foreign Students	Total
1994/95	1,577	33	1,610	-	-	-	1,577	33	1,610
1995/96	1,535	39	1,574	1	1	2	1,536	40	1,576
1996/97	1,532	59	1,591	1	16	17	1,533	75	1,608
1997/98	1,497	55	1,552	-	11	11	1,497	66	1,563
1998/99	1,498	61	1,559	6	15	21	1,504	76	1,580
1999/2000	1,571	51	1,622	7	21	28	1,578	72	1,650
2000/01	1,692	56	1,748	8	18	26	1,700	74	1,774
2001/02	1,856	47	1,903	4	20	24	1,860	67	1,927
2002/03	1,959	42	2,001	10	12	22	1,969	54	2,023
2003/04	2,028	41	2,069	10	10	20	2,038	51	2,089
2004/05	2,153	22	2,175	10	9	19	2,163	31	2,194
2005/06	2,336	19	2,355	6	9	15	2,342	28	2,370
2006/07	2,412	29	2,441	7	10	17	2,419	39	2,458
2007/08	2,518	28	2,546	6	10	16	2,524	38	2,562
2008/09	2,627	14	2,641	13	10	23	2,640	24	2,664
2009/10	2,704	10	2,714	10	10	20	2,714	20	2,734
2010/11	2,799	9	2,808	12	10	22	2,811	19	2,830
2011/12	2,861	13	2,874	11	4	15	2,872	17	2,889
2012/13	2,878	9	2,887	14	4	18	2,892	13	2,905
2013/14	2,865	9	2,874	14	3	17	2,879	12	2,891
2014/15	2,881	6	2,887	17	6	23	2,898	12	2,910
2015/16	2,882	7	2,889	13	5	18	2,895	12	2,907
2016/17	2,868	11	2,879	14	4	18	2,882	15	2,897
2017/18	2,863	9	2,872	12	5	17	2,875	14	2,889

This series **excludes** enrolment in MED-P program from McGill, repeaters, returnees from leaves of absence and transfers from one Canadian faculty of medicine to another.

This series **includes** students promoted into year 1 from *année préparatoire* .

Table/Tableau G-8
First Year Enrolment in Canadian Faculties of Medicine by Sex
1990/91 - 2017/18
Inscriptions en première année aux facultés de médecine canadiennes
selon le sexe

Year	Men Hommes	Women Femmes	Total	% Women % Femmes
1990/91	976	815	1,791	45.5
1991/92	969	806	1,775	45.4
1992/93	828	776	1,604	48.4
1993/94	824	859	1,683	51.0
1994/95	847	804	1,651	48.7
1995/96	771	842	1,613	52.2
1996/97	791	807	1,598	50.5
1997/98	798	779	1,577	49.4
1998/99	770	811	1,581	51.3
1999/2000	790	844	1,634	51.7
2000/01	809	954	1,763	54.1
2001/02	784	1,137	1,921	59.2
2002/03	830	1,198	2,028	59.1
2003/04	856	1,240	2,096	59.2
2004/05	916	1,277	2,193	58.2
2005/06	1,007	1,373	2,380	57.7
2006/07	1,037	1,423	2,460	57.8
2007/08	1,094	1,475	2,569	57.4
2008/09	1,127	1,533	2,660	57.6
2009/10	1,170	1,572	2,742	57.3
2010/11	1,232	1,597	2,829	56.5
2011/12	1,325	1,577	2,902	54.3
2012/13	1,299	1,620	2,919	55.5
2013/14	1,285	1,630	2,915	55.9
2014/15	1,288	1,633	2,921	55.9
2015/16	1,367	1,552	2,919	53.2
2016/17	1,219	1,696	2,915	58.2
2017/18	1,273	1,643	2,916	56.3

Note: Includes students enrolled in *année préparatoire* at the Université de Montréal (73 men and 138 women in 2017/18)

Table/Tableau G-9**First Year Enrolment in Canadian Faculties of Medicine by Language of Instruction and Sex
1990/91 - 2017/18****Inscriptions en première année aux facultés de médecine canadiennes
selon la langue d'enseignement et le sexe**

Year	English Language			French Language			Total		
	Men	Women	Total	Men	Women	Total	Men	Women	Total
1990/91	809	565	1,374	167	250	417	976	815	1,791
1991/92	795	558	1,353	174	248	422	969	806	1,775
1992/93	734	619	1,353	94	157	251	828	776	1,604
1993/94	653	603	1,256	171	256	427	824	859	1,683
1994/95	678	561	1,239	169	243	412	847	804	1,651
1995/96	632	593	1,225	139	249	388	771	842	1,613
1996/97	653	580	1,233	138	227	365	791	807	1,598
1997/98	662	565	1,227	136	214	350	798	779	1,577
1998/99	658	581	1,239	112	230	342	770	811	1,581
1999/2000	640	601	1,241	150	243	393	790	844	1,634
2000/01	680	667	1,347	129	287	416	809	954	1,763
2001/02	656	804	1,460	128	333	461	784	1,137	1,921
2002/03	694	830	1,524	136	368	504	830	1,198	2,028
2003/04	682	867	1,549	174	373	547	856	1,240	2,096
2004/05	714	903	1,617	202	374	576	916	1,277	2,193
2005/06	800	939	1,739	207	434	641	1,007	1,373	2,380
2006/07	818	988	1,806	219	435	654	1,037	1,423	2,460
2007/08	867	1,038	1,905	227	437	664	1,094	1,475	2,569
2008/09	892	1,078	1,970	235	455	690	1,127	1,533	2,660
2009/10	928	1,136	2,064	242	436	678	1,170	1,572	2,742
2010/11	968	1,126	2,094	264	471	735	1,232	1,597	2,829
2011/12	1,047	1,115	2,162	278	462	740	1,325	1,577	2,902
2012/13	1,033	1,149	2,182	266	471	737	1,299	1,620	2,919
2013/14	1,022	1,155	2,177	263	475	738	1,285	1,630	2,915
2014/15	1,039	1,139	2,178	249	494	743	1,288	1,633	2,921
2015/16	1,086	1,094	2,180	281	458	739	1,367	1,552	2,919
2016/17	969	1,208	2,177	250	488	738	1,219	1,696	2,915
2017/18	1,016	1,165	2,181	257	478	735	1,273	1,643	2,916

Note: Excludes repeaters and returnees from leaves of absence.

Table/Tableau G-10

**First Year Enrolment in Canadian Faculties of Medicine by Faculty of Medicine
1990/91 - 2017/18**

Inscriptions en première année aux facultés de médecine canadiennes selon la faculté de médecine

Year	Faculty of Medicine																Total	
	Mem	Dal	Lav	Sher	Mtl	McG	Ott	Qns	Tor	McM	UWO	NOSM	Man	Sask	Alta	Cal		UBC
1990/91	57	87	142	102	173	153	84	72	252	101	108	na	85	61	121	72	121	1,791
1991/92	56	85	142	102	178	145	84	75	253	99	97	na	81	61	122	73	122	1,775
1992/93	56	86	143	108	na	142	84	75	252	100	97	na	81	63	122	74	121	1,604
1993/94	56	84	143	104	180	139	85	75	178	100	96	na	75	62	115	70	121	1,683
1994/95	56	83	144	101	167	134	84	75	181	101	98	na	72	56	106	72	121	1,651
1995/96	60	86	132	92	164	120	84	75	175	102	98	na	73	57	104	71	120	1,613
1996/97	62	92	113	89	163	110	84	75	177	100	101	na	74	57	105	76	120	1,598
1997/98	63	86	114	93	143	107	84	75	178	102	99	na	75	56	110	72	120	1,577
1998/99	63	91	114	90	138	111	86	77	178	100	96	na	71	57	107	81	121	1,581
1999/2000	61	86	132	104	157	121	90	76	178	100	97	na	75	51	105	80	121	1,634
2000/01	60	89	140	112	164	129	102	80	193	113	104	na	75	55	126	101	120	1,763
2001/02	61	86	155	125	181	135	121	90	199	130	118	na	88	60	128	116	128	1,921
2002/03	61	84	172	137	195	147	135	100	199	140	134	na	90	61	131	113	129	2,028
2003/04	62	94	185	150	212	160	136	100	200	139	132	na	89	60	133	116	128	2,096
2004/05	61	93	197	157	222	174	136	102	200	138	133	na	87	60	128	105	200	2,193
2005/06	60	92	211	168	262	176	152	101	205	150	133	56	94	62	129	104	225	2,380
2006/07	61	94	209	194	251	174	152	100	219	149	139	56	101	61	134	143	223	2,460
2007/08	61	94	209	193	262	172	152	102	226	164	148	56	101	69	145	155	260	2,569
2008/09	64	102	220	205	265	176	156	100	224	183	147	58	110	85	155	153	257	2,660
2009/10	65	104	217	196	265	177	157	100	224	198	159	58	110	84	189	181	258	2,742
2010/11	65	109	226	219	290	175	165	101	250	206	171	64	110	84	167	170	257	2,829
2011/12	64	112	229	215	296	186	165	100	259	211	171	66	111	84	166	177	290	2,902
2012/13	64	111	228	211	298	187	165	100	269	206	172	65	111	101	167	176	288	2,919
2013/14	81	110	229	208	301	188	166	102	259	209	172	64	112	101	165	159	289	2,915
2014/15	81	110	231	212	300	191	164	100	263	207	171	64	109	102	162	164	290	2,921
2015/16	80	110	231	210	298	192	165	100	260	207	171	64	113	102	162	162	292	2,919
2016/17	80	109	230	208	300	183	166	100	260	205	171	64	112	104	164	167	292	2,915
2017/18	81	110	235	208	292	181	165	101	261	207	171	65	114	105	162	167	291	2,916

Note: Includes students enrolled in *année préparatoire* at the Université de Montréal

Table/Tableau G-11
Enrolment in Canadian Faculties of Medicine by Sex and Years to Graduation
2017/18

Inscriptions aux facultés de médecine canadiennes selon le sexe et le nombre d'années avant l'obtention du diplôme MD

Faculty of Medicine	Years to Graduation															Total		
	V ²			IV			III			II			I			M/H	W/F	T
	M/H	W/F	T	M/H	W/F	T	M/H	W/F	T	M/H	W/F	T	M/H	W/F	T			
Memorial University of Newfoundland	*	*	*	31	50	81	27	52	79	40	41	81	32	47	79	130	190	320
Dalhousie University	*	*	*	39	71	110	50	60	110	62	58	120	51	59	110	202	248	450
Laval Université ¹	85	152	237	70	155	225	97	133	230	62	158	220	77	125	202	391	723	1,114
Université de Sherbrooke	*	*	*	75	133	208	79	125	204	69	139	208	71	128	199	294	525	819
Université de Montréal	75	139	214	98	195	293	102	201	303	113	199	312	98	201	299	486	935	1,421
McGill University	10	4	14	74	101	175	85	93	178	80	97	177	84	103	187	333	398	731
University of Ottawa	6	4	10	65	102	167	67	99	166	87	73	160	79	93	172	304	371	675
Queen's University	1	2	3	43	58	101	38	59	97	50	48	98	55	45	100	187	212	399
University of Toronto	7	7	14	116	133	249	105	153	258	123	137	260	141	139	280	492	569	1,061
McMaster University	3	*	3	*	*	*	98	106	204	91	116	207	107	106	213	299	328	627
Western University	2	*	2	94	77	171	100	68	168	105	70	175	111	70	181	412	285	697
Northern Ontario School of Medicine	*	*	*	27	38	65	16	46	62	27	35	62	28	41	69	98	160	258
University of Manitoba	*	*	*	51	63	114	55	53	108	60	54	114	70	43	113	236	213	449
University of Saskatchewan	*	*	*	56	49	105	50	53	103	45	54	99	54	44	98	205	200	405
University of Alberta	*	*	*	77	85	162	73	91	164	75	87	162	84	72	156	309	335	644
University of Calgary	*	*	*	*	*	*	74	93	167	70	91	161	60	99	159	204	283	487
University of British Columbia	*	2	2	157	136	293	141	157	298	160	134	294	133	160	293	591	589	1,180
Total, Canada	160	291	451	1,073	1,446	2,519	1,257	1,642	2,899	1,319	1,591	2,910	1,335	1,575	2,910	5,173	6,564	11,737

M/H = Men/Hommes W/F = Women/Femmes T = Total * not yet enrolled

1 Students at Université Laval have the option to spread their MD program over five years instead of four years. The numbers who are five years from graduation include an estimate of those students already enrolled in year 1 who opt to prolong their program; those reported as being four years from graduation include those in year 1 who intend to complete the program in 4 years and those in year 2 who intend to take an additional year; those reported as being three years from graduation include those in year 2 who intend to complete the program in 4 years and those in year 3 who intend to take an additional year.

2 Students listed as five years plus to graduation is the students who choose to extend their program of study over five years. Also include *enrolled in année préparatoire of the four year program at Université de Montréal.*

Table/Tableau G-12i

**Enrolment in Canadian Faculties of Medicine by Year of Study and Sex
2017/18**

Inscriptions aux facultés de médecine canadiennes selon l'année d'études et le sexe

Faculty of Medicine Faculté de médecine	Duration of Program	Année préparatoire *			First Year Première année			Intermediate Years Années intermédiaires			Final Year Dernière année			Total		
		M/H	W/F	T	M/H	W/F	T	M/H	W/F	T	M/H	W/F	T	M/H	W/F	T
Memorial University of Newfoundland	4 yrs/ans	*	*	*	31	50	81	67	93	160	32	47	79	130	190	320
Dalhousie University	4 yrs/ans	*	*	*	39	71	110	112	118	230	51	59	110	202	248	450
Laval Université	4 yrs/ans	*	*	*	85	150	235	229	448	677	77	125	202	391	723	1,114
Université de Sherbrooke	4 yrs/ans	*	*	*	75	133	208	148	264	412	71	128	199	294	525	819
Université de Montréal	4 yrs/ans	75	139	214	97	195	292	216	400	616	98	201	299	486	935	1,421
McGill University	4 yrs/ans	*	*	*	79	102	181	169	193	362	85	103	188	333	398	731
Subtotal, Québec		75	139	214	336	580	916	762	1,305	2,067	331	557	888	1,504	2,581	4,085
University of Ottawa	4 yrs/ans	*	*	*	64	101	165	161	177	338	79	93	172	304	371	675
Queen's University	4 yrs/ans	*	*	*	43	58	101	89	109	198	55	45	100	187	212	399
University of Toronto	4 yrs/ans	*	*	*	123	138	261	228	291	519	141	140	281	492	569	1,061
McMaster University	3 yrs/ans	*	*	*	101	106	207	91	116	207	107	106	213	299	328	627
Western University	4 yrs/ans	*	*	*	94	77	171	207	138	345	111	70	181	412	285	697
Northern Ontario School of Medicine	4 yrs/ans	*	*	*	27	38	65	43	81	124	28	41	69	98	160	258
Subtotal, Ontario		*	*	*	452	518	970	819	912	1,731	521	495	1,016	1,792	1,925	3,717
University of Manitoba	4 yrs/ans	*	*	*	51	63	114	115	107	222	70	43	113	236	213	449
University of Saskatchewan	4 yrs/ans	*	*	*	56	49	105	95	107	202	54	44	98	205	200	405
University of Alberta	4 yrs/ans	*	*	*	77	85	162	148	178	326	84	72	156	309	335	644
University of Calgary	3 yrs/ans	*	*	*	74	93	167	70	91	161	60	99	159	204	283	487
Subtotal, Alberta		*	*	*	151	178	329	218	269	487	144	171	315	513	618	1,131
University of British Columbia	4 yrs/ans	*	*	*	157	134	291	301	295	596	133	160	293	591	589	1,180
Total, Canada		75	139	214	1,273	1,643	2,916	2,489	3,206	5,695	1,336	1,576	2,912	5,173	6,564	11,737
<i>% Distribution by Sex</i>		<i>35.0</i>	<i>65.0</i>	<i>100.0</i>	<i>43.7</i>	<i>56.3</i>	<i>100.0</i>	<i>43.7</i>	<i>56.3</i>	<i>100.0</i>	<i>45.9</i>	<i>54.1</i>	<i>100.0</i>	<i>44.1</i>	<i>55.9</i>	<i>100.0</i>

M/H = Men/Hommes W/F = Women/Femmes T = Total

* In 2017/18, along with 211 students promoted from the année préparatoire, Université de Montréal admitted 82 students directly into year 1 of the four-year program.

Table/Tableau G-12ii

**% Distribution by Faculty of Medicine of Total Enrolment in Canadian Faculties of Medicine by Year of Study and Sex
2017/18**

**Répartition en % selon la faculté de médecine du nombre total d'inscriptions aux facultés de médecine canadiennes
selon l'année d'études et le sexe**

Faculty of Medicine Faculté de médecine	Duration of Program	First Year* Première année*			Intermediate Years Années intermédiaires			Final Year Dernière année			Total		
		M/H	W/F	T	M/H	W/F	T	M/H	W/F	T	M/H	W/F	T
Memorial University of Newfoundland	4 yrs/ans	2.3	2.8	2.6	2.7	2.9	2.8	2.4	3.0	2.7	2.5	2.9	2.7
Dalhousie University	4 yrs/ans	2.9	4.0	3.5	4.5	3.7	4.0	3.8	3.7	3.8	3.9	3.8	3.8
Laval Université	4 yrs/ans	6.3	8.4	7.5	9.2	14.0	11.9	5.8	7.9	6.9	7.6	11.0	9.5
Université de Sherbrooke	4 yrs/ans	5.6	7.5	6.6	5.9	8.2	7.2	5.3	8.1	6.8	5.7	8.0	7.0
Université de Montréal	4 yrs/ans	12.8	18.7	16.2	8.7	12.5	10.8	7.3	12.8	10.3	9.4	14.2	12.1
McGill University	4 yrs/ans	5.9	5.7	5.8	6.8	6.0	6.4	6.4	6.5	6.5	6.4	6.1	6.2
Subtotal, Québec		30.5	40.3	36.1	30.6	40.7	36.3	24.8	35.3	30.5	29.1	39.3	34.8
University of Ottawa	4 yrs/ans	4.7	5.7	5.3	6.5	5.5	5.9	5.9	5.9	5.9	5.9	5.7	5.8
Queen's University	4 yrs/ans	3.2	3.3	3.2	3.6	3.4	3.5	4.1	2.9	3.4	3.6	3.2	3.4
University of Toronto	4 yrs/ans	9.1	7.7	8.3	9.2	9.1	9.1	10.6	8.9	9.6	9.5	8.7	9.0
McMaster University	3 yrs/ans	7.5	5.9	6.6	3.7	3.6	3.6	8.0	6.7	7.3	5.8	5.0	5.3
Western University	4 yrs/ans	7.0	4.3	5.5	8.3	4.3	6.1	8.3	4.4	6.2	8.0	4.3	5.9
Northern Ontario School of Medicine	4 yrs/ans	2.0	2.1	2.1	1.7	2.5	2.2	2.1	2.6	2.4	1.9	2.4	2.2
Subtotal, Ontario		33.5	29.1	31.0	32.9	28.4	30.4	39.0	31.4	34.9	34.6	29.3	31.7
University of Manitoba	4 yrs/ans	3.8	3.5	3.6	4.6	3.3	3.9	5.2	2.7	3.9	4.6	3.2	3.8
University of Saskatchewan	4 yrs/ans	4.2	2.7	3.4	3.8	3.3	3.5	4.0	2.8	3.4	4.0	3.0	3.5
University of Alberta	4 yrs/ans	5.7	4.8	5.2	5.9	5.6	5.7	6.3	4.6	5.4	6.0	5.1	5.5
University of Calgary	3 yrs/ans	5.5	5.2	5.3	2.8	2.8	2.8	4.5	6.3	5.5	3.9	4.3	4.1
Subtotal, Alberta		11.2	10.0	10.5	8.8	8.4	8.6	10.8	10.9	10.8	9.9	9.4	9.6
University of British Columbia	4 yrs/ans	11.6	7.5	9.3	12.1	9.2	10.5	10.0	10.2	10.1	11.4	9.0	10.1
Total, Canada		100.0	100.0	100.0	100.0	100.0	100.0	100.0	100.0	100.0	100.0	100.0	100.0

M/H = Men/Hommes W/F = Women/Femmes T = Total

* In 2017/18, along with 209 students promoted from the année préparatoire, Université de Montréal admitted 82 students directly into year 1 of the four-year program.

Table/Tableau G-12iii

**% Distribution by Sex of Total Enrolment in Canadian Faculties of Medicine by Year of Study and Sex
2017/18**

**Répartition en % selon le sexe du nombre total d'inscriptions aux facultés de médecine canadiennes
selon l'année d'études et le sexe**

Faculty of Medicine Faculté de médecine	Duration of Program	First Year* Première année*			Intermediate Years Années intermédiaires			Final Year Dernière année			Total		
		M/H	W/F	T	M/H	W/F	T	M/H	W/F	T	M/H	W/F	T
Memorial University of Newfoundland	4 yrs/ans	38.3	61.7	100.0	41.9	58.1	100.0	40.5	59.5	100.0	40.6	59.4	100.0
Dalhousie University	4 yrs/ans	35.5	64.5	100.0	48.7	51.3	100.0	46.4	53.6	100.0	44.9	55.1	100.0
Laval Université	4 yrs/ans	36.2	63.8	100.0	33.8	66.2	100.0	38.1	61.9	100.0	35.1	64.9	100.0
Université de Sherbrooke	4 yrs/ans	36.1	63.9	100.0	35.9	64.1	100.0	35.7	64.3	100.0	35.9	64.1	100.0
Université de Montréal	4 yrs/ans	34.0	66.0	100.0	35.1	64.9	100.0	32.8	67.2	100.0	34.2	65.8	100.0
McGill University	4 yrs/ans	43.6	56.4	100.0	46.7	53.3	100.0	45.2	54.8	100.0	45.6	54.4	100.0
Subtotal, Québec		36.4	63.6	100.0	36.9	63.1	100.0	37.3	62.7	100.0	36.8	63.2	100.0
University of Ottawa	4 yrs/ans	38.8	61.2	100.0	47.6	52.4	100.0	45.9	54.1	100.0	45.0	55.0	100.0
Queen's University	4 yrs/ans	42.6	57.4	100.0	44.9	55.1	100.0	55.0	45.0	100.0	46.9	53.1	100.0
University of Toronto	4 yrs/ans	47.1	52.9	100.0	43.9	56.1	100.0	50.2	49.8	100.0	46.4	53.6	100.0
McMaster University	3 yrs/ans	48.8	51.2	100.0	44.0	56.0	100.0	50.2	49.8	100.0	47.7	52.3	100.0
Western University	4 yrs/ans	55.0	45.0	100.0	60.0	40.0	100.0	61.3	38.7	100.0	59.1	40.9	100.0
Northern Ontario School of Medicine	4 yrs/ans	41.5	58.5	100.0	34.7	65.3	100.0	40.6	59.4	100.0	38.0	62.0	100.0
Subtotal, Ontario		46.6	53.4	100.0	47.3	52.7	100.0	51.3	48.7	100.0	48.2	51.8	100.0
University of Manitoba	4 yrs/ans	44.7	55.3	100.0	51.8	48.2	100.0	61.9	38.1	100.0	52.6	47.4	100.0
University of Saskatchewan	4 yrs/ans	53.3	46.7	100.0	47.0	53.0	100.0	55.1	44.9	100.0	50.6	49.4	100.0
University of Alberta	4 yrs/ans	47.5	52.5	100.0	45.4	54.6	100.0	53.8	46.2	100.0	48.0	52.0	100.0
University of Calgary	3 yrs/ans	44.3	55.7	100.0	43.5	56.5	100.0	37.7	62.3	100.0	41.9	58.1	100.0
Subtotal, Alberta		45.9	54.1	100.0	44.8	55.2	100.0	45.7	54.3	100.0	45.4	54.6	100.0
University of British Columbia	4 yrs/ans	54.0	46.0	100.0	50.5	49.5	100.0	45.4	54.6	100.0	50.1	49.9	100.0
Total, Canada		43.1	56.9	100.0	43.7	56.3	100.0	45.9	54.1	100.0	44.1	55.9	100.0

M/H = Men/Hommes W/F = Women/Femmes T = Total

* In 2017/18, along with 209 students promoted from the année préparatoire, Université de Montréal admitted 82 students directly into year 1 of the four-year program.

Table/Tableau G-13

**Enrolment in Canadian Faculties of Medicine by Year of Study and Campus Location
2017/18**

Inscriptions aux facultés de médecine canadiennes selon l'année d'études et le campus

Faculty of Medicine	Campus	Année prép.	Year 1	Year 2	Year 3	Year 4	Total
Memorial University of Newfoundland	St. John's	na	81	79	81	79	320
Dalhousie University	Halifax	na	80	81	89	80	330
	DMNB (Saint John NB)	na	30	29	31	30	120
	subtotal	na	110	110	120	110	450
Laval Université	Ste-Foy	na	235	458	219	202	1,114
Université de Sherbrooke	Sherbrooke	na	146	140	149	144	579
	Saguenay	na	35	38	33	33	139
	Moncton	na	27	26	26	22	101
	subtotal	na	208	204	208	199	819
Université de Montréal	Montréal	177	247	261	268	266	1,219
	Mauricie (Trois-Rivières)	37	45	43	44	33	202
	subtotal	214	292	304	312	299	1,421
McGill University	Montréal	na	181	183	179	188	731
University of Ottawa	Ottawa	na	165	168	170	172	675
Queen's University	Kingston	na	101	100	98	100	399
University of Toronto	St. George (Toronto)	na	206	202	205	224	837
	Mississauga	na	55	55	57	57	224
	subtotal	na	261	257	262	281	1,061
McMaster University	Hamilton	na	151	150	157	na	458
	Niagara	na	28	28	28	na	84
	Waterloo	na	28	29	28	na	85
	subtotal	na	207	207	213	na	627
Western University	London	na	133	133	136	141	543
	Windsor	na	38	37	39	40	154
	subtotal	na	171	170	175	181	697
Northern Ontario School of Medicine	Sudbury	na	29	26	28	29	112
	Thunder Bay	na	36	36	34	40	146
	subtotal	na	65	62	62	69	258
University of Manitoba	Winnipeg	na	114	108	114	113	449
University of Saskatchewan	Saskatoon	na	105	64	63	58	290
	Regina	na	0	39	36	40	115
	subtotal	na	105	103	99	98	405
University of Alberta	Edmonton	na	162	164	162	156	644
University of Calgary	Calgary	na	167	161	159	na	487
University of British Columbia	VFMP (Vancouver)	na	195	204	196	192	787
	IMP (Victoria)	na	32	31	33	32	128
	NMP (Prince George)	na	32	34	34	32	132
	SMP (Kelowna, southern)	na	32	32	32	37	133
	subtotal	na	291	301	295	293	1,180
Total, Canada		214	2,916	3,139	2,928	2,540	11,737
enrolment at main campi		177	2,498	2,682	2,473	2,144	9,974
enrolment at regional campi		37	418	457	455	396	1,763

Table/Tableau G-14

**Non-Canadians Enrolled in Canadian Faculties of Medicine by Year of Study and Legal Status in Canada
2017/18**

Étudiants non canadiens inscrits aux facultés de médecine canadiennes selon l'année d'études et la situation juridique au Canada

Faculty of Medicine Faculté de médecine	Année préparatoire *			First Year Première année			Intermediate Years Années intermédiaires			Final Year Dernière année			Total		
	PR	SV	Total	PR	SV	Total	PR	SV	Total	PR	SV	Total	PR	SV	Total
Memorial University of Newfoundland	*	*	*	0	0	0	1	0	1	0	0	0	1	0	1
Dalhousie University	*	*	*	0	0	0	2	6	8	2	2	4	4	8	12
Laval Université	*	*	*	5	0	5	12	2	14	7	0	7	24	2	26
Université de Sherbrooke	*	*	*	1	0	1	5	2	7	4	2	6	10	4	14
Université de Montréal	1	2	3	4	1	5	13	3	16	7	1	8	25	7	32
McGill University	*	*	*	9	2	11	21	3	24	12	3	15	42	8	50
University of Ottawa	*	*	*	2	0	2	4	0	4	3	0	3	9	0	9
Queen's University	*	*	*	3	0	3	0	0	0	0	0	0	3	0	3
University of Toronto	*	*	*	3	1	4	25	1	26	21	0	21	49	2	51
McMaster University	*	*	*	4	0	4	2	0	2	2	2	4	8	2	10
Western University	*	*	*	0	0	0	8	0	8	3	0	3	11	0	11
Northern Ontario School of Medicine	*	*	*	0	0	0	0	0	0	0	0	0	0	0	0
University of Manitoba	*	*	*	1	0	1	5	0	5	4	0	4	10	0	10
University of Saskatchewan	*	*	*	1	0	1	4	0	4	4	0	4	9	0	9
University of Alberta	*	*	*	3	0	3	9	0	9	3	0	3	15	0	15
University of Calgary	*	*	*	3	5	8	6	3	9	4	0	4	13	8	21
University of British Columbia	*	*	*	3	0	3	12	0	12	12	0	12	27	0	27
Total, Canada 2017/18	1	2	3	42	9	51	129	20	149	88	10	98	260	41	301
Total, 2016/17	1	1	2	53	11	64	159	18	177	92	11	103	305	41	346
Total, 2015/16	1	2	3	72	7	79	170	18	188	63	16	79	306	43	349
Total, 2014/15	3	2	5	79	7	86	136	22	158	58	11	69	276	42	318
Total, 2013/14	4	1	5	77	10	87	115	19	134	53	19	72	249	49	298
Total, 2012/13	0	1	1	63	9	72	92	26	118	47	21	68	208	57	265
Total, 2011/12	4	2	6	44	13	57	79	29	108	69	18	87	196	62	258
Total, 2010/11	4	1	5	25	9	34	114	32	146	38	28	66	181	70	251
Total, 2009/10	3	0	3	51	11	62	98	36	134	49	47	96	201	94	295

PR = Permanent Resident, refugees, refugee claimants

SV = Student Visa, diplomatic visas, etc.

* = not applicable

Table/Tableau G-15

**Non-Canadians Enrolled in Canadian Faculties of Medicine by Legal Status in Canada and Country of Citizenship
2017/18**

**Étudiants non canadiens inscrits aux facultés de médecine canadiennes selon la situation juridique
au Canada et le pays de citoyenneté**

Continent	Country of Citizenship	Permanent Resident	Student visa	Total	Pays de citoyenneté
Asia / Asie	Bangladesh	3	0	3	Bangladesh
	China	30	1	31	Chine
	Hong Kong	1	0	1	Hong Kong
	India	20	2	22	Inde
	Indonesia	1	0	1	Indonesie
	Iran	20	0	20	Iran
	Iraq	1	0	1	Irak
	Israel	4	0	4	Israël
	Japan	1	0	1	Japon
	Kuwait	1	7	8	Koweït
	Lebanon	3	0	3	Liban
	Malaysia	5	3	8	Malaisie
	Maldives	0	2	2	Maldives
	Nepal	1	0	1	Népal
	Pakistan	9	0	9	Pakistan
	Palestinian Authority	0	0	0	Palistine
	Philippines	2	0	2	Philippines
	Saudi Arabia	0	1	1	Arabie Saoudite
	Singapore	2	1	3	Singapour
	South Korea	17	1	18	Corée, Rép. de (Corée du Sud)
Sri Lanka	2	0	2	Sri Lanka	
Syrian Arab Republic	3	0	3	Syrie (République arabe syrienne)	
Taiwan	4	0	4	Taiwan	
Vietnam	1	0	1	Viet Nam	
	Subtotal	131	18	149	Sous-total
Europe	Albania	0	0	0	Albanie
	Austria	1	0	1	Autriche
	Bosnia-Herzegovina	1	0	1	Bosnie-et-Herzégovine
	Bulgaria	0	0	0	Bulgarie
	Denmark	0	0	0	Danemark
	France	16	9	25	France
	Germany	4	0	4	Allemagne
	Ireland	1	0	1	Irlande (République d')
	Italy	1	0	1	Italie
	Netherlands	1	0	1	Pays-bas
	Norway	0	0	0	Norvège
	Poland	1	0	1	Pologne
	Romania	3	0	3	Roumanie
	Russia	5	0	5	Russie
	Serbia and Montenegro	1	0	1	Serbie et Monténégro
Ukraine	2	0	2	Ukraine	
United Kingdom	4	0	4	Royaume-Uni	
	Subtotal	41	9	50	Sous-total
Africa / Afrique	Algeria	9	1	10	Algérie
	Benin	0	0	0	Bénin
	Cameroon	3	0	3	Cameroun
	Congo (Democratic Republic)	0	0	0	Congo (République dém. du)
	Côte d'Ivoire	1	0	1	Côte d'Ivoire
	Egypt	10	0	10	Egypte
	Eritrea	1	0	1	Érythrée
	Ethiopia	1	0	1	Ethiopie
	Ghana	2	0	2	Ghana
	Guinea	0	0	0	Guinée
	Kenya	0	1	1	Kenya
	Libya	4	0	4	Libye
	Mauritania	1	0	1	Mauritanie
	Mauritius	1	0	1	Maurice
	Morocco	2	1	3	Maroc
Nigeria	1	1	2	Nigeria	
Rwanda	0	1	1	Rwanda	

(continued/suite)

Table/Tableau G-15 (continued/suite)
Non-Canadians Enrolled in Canadian Faculties of Medicine by Legal Status in Canada and Country of Citizenship,
2017/18

Étudiants non canadiens inscrits aux facultés de médecine canadiennes selon la situation juridique
au Canada et le pays de citoyenneté, 2017/18

Continent	Country of Citizenship	Permanent Resident	Student visa	Total	Pays de citoyenneté
Africa / Afrique (continued/suite)	Senegal	3	0	3	Sénégal
	South Africa	1	1	2	Afrique du sud
	Sudan	1	0	1	Soudan
	Togo	0	0	0	Togo
	Tunisia	2	0	2	Tunisie
	Subtotal	43	6	49	Sous-total
Caribbean / Caraïbes	Antigua	0	0	0	Antigua-et-Barbuda
	Cuba	1	0	1	Cuba
	Dominican Republic	1	0	1	République Dominicaine
	Haiti	3	0	3	Haïti
	Jamaica	1	0	1	Jamaïque
	Trinidad and Tobago	1	0	1	Trinité-et-Tobago
Subtotal	7	0	7	Sous-total	
South America / Amérique du Sud	Brazil	4	0	4	Brésil
	Chile	1	0	1	Chili
	Colombia	1	0	1	Colombie
	Guyana	1	0	1	Guyana
	Uruguay	1	0	1	Uruguay
	Venezuela	1	0	1	Venezuela
Subtotal	9	0	9	Sous-total	
Central America / Amérique centrale	El Salvador	0	0	0	El Salvador
	Mexico	3	0	3	Mexique
	Subtotal	3	0	3	Sous-total
Oceania / Océanie	Australia	1	0	1	Australie
	French Polynesia	0	0	0	Polynésie française
	New Zealand	2	0	2	Nouvelle Zélande
	Samoa	1	0	1	Samoa
	Subtotal	4	0	4	Sous-total
	United States of America	11	7	18	États-Unis
	Subtotal	11	7	18	Sous-total
Total		249	40	289	Total

Includes enrolment in *année préparatoire* at Université de Montréal.

Permanent Resident includes refugees, refugee claimants, diplomatic visas, etc.

Table/Tableau G-16

Enrolment in Canadian Faculties of Medicine by Residence of province

2017/18

Inscriptions aux facultés de médecine canadiennes selon la résidence permanente

Faculty of Medicine	Permanent Residence												Total, Canada	USA	Other foreign	Total
	NL	PEI	NS	NB	Que	Ont	Man	Sask	Alta	BC	Yukon	NWT / Nunavut				
Memorial University of Newfoundland	246	17	5	40	0	8	0	0	1	1	2	0	320	0	0	320
Dalhousie University	3	24	262	121	0	30	0	0	2	0	0	0	442	0	8	450
Laval Université	0	0	0	13	1,097	2	0	0	0	0	0	0	1,112	0	2	1,114
Université de Sherbrooke	0	3	12	97	696	1	0	0	1	2	0	0	812	1	6	819
Université de Montréal	0	0	1	24	1,356	22	2	1	3	5	0	0	1,414	0	7	1,421
McGill University	0	0	2	1	655	56	3	0	4	1	0	0	722	6	3	731
Subtotal, Québec	0	3	15	135	3,804	81	5	1	8	8	0	0	4,060	7	18	4,085
University of Ottawa	2	0	29	12	36	533	15	4	18	25	0	0	674	1	0	675
Queen's University	2	0	7	1	0	325	5	0	22	34	1	0	397	2	0	399
University of Toronto	2	0	9	5	10	964	6	4	27	31	0	0	1,058	1	2	1,061
McMaster University	0	1	5	5	7	574	3	1	14	13	0	0	623	3	1	627
Western University	0	2	2	2	10	618	3	0	18	39	0	0	694	2	1	697
Northern Ontario School of Medicine	0	0	3	1	2	239	2	0	0	5	3	3	258	0	0	258
Subtotal, Ontario	6	3	55	26	65	3,253	34	9	99	147	4	3	3,704	9	4	3,717
University of Manitoba	0	0	0	0	2	17	418	1	6	5	0	0	449	0	0	449
University of Saskatchewan	0	0	0	1	2	23	4	333	26	13	0	2	404	0	1	405
University of Alberta	1	0	0	2	3	24	0	5	584	24	0	1	644	0	0	644
University of Calgary	1	0	5	0	6	54	0	4	376	25	3	1	475	4	8	487
Subtotal, Alberta	2	0	5	2	9	78	0	9	960	49	3	2	1,119	4	8	1,131
University of British Columbia	0	0	5	1	8	73	4	8	22	1,048	4	4	1,177	1	2	1,180
Total	257	47	347	326	3,890	3,563	465	361	1,124	1,271	13	11	11,675	21	41	11,737

Includes enrolment in *année préparatoire* at the *Université de Montréal*. * One student in Sask has an unknown PR code (99); They were placed in other

Table/Tableau G-17
Enrolment in Year 1 for the First Time in Canadian Faculties of Medicine by Residence of Province
2017/18

Inscriptions pour la première fois en 1^{ère} année aux facultés de médecine canadiennes selon la résidence permanente

Faculty of Medicine	Permanent Residence												Total, Canada	USA	Other foreign	Total
	NL	PEI	NS	NB	Que	Ont	Man	Sask	Alta	BC	Yukon	NWT / Nunavut				
Memorial University of Newfoundland	64	4	0	10	0	0	0	0	1	0	1	0	80	0	0	80
Dalhousie University	1	5	66	30	0	7	0	0	0	0	0	0	109	0	0	109
Laval Université	0	0	0	3	222	1	0	0	0	0	0	0	226	0	0	226
Université de Sherbrooke	0	1	3	27	171	0	0	0	0	0	0	0	202	1	0	203
Université de Montréal	0	0	0	0	79	0	0	0	2	1	0	0	82	0	0	82
McGill University	0	0	0	0	156	17	3	0	2	0	0	0	178	2	0	180
Subtotal, Québec	0	1	3	30	628	18	3	0	4	1	0	0	688	3	0	691
University of Ottawa	1	0	9	4	7	134	2	1	1	5	0	0	164	0	0	164
Queen's University	1	0	0	0	0	84	1	0	4	10	0	0	100	0	0	100
University of Toronto	0	0	2	1	1	224	3	3	6	18	0	0	258	1	1	260
McMaster University	0	0	3	2	1	186	1	0	5	5	0	0	203	0	0	203
Western University	0	1	2	0	2	150	0	0	5	9	0	0	169	1	0	170
Northern Ontario School of Medicine	0	0	1	0	0	59	1	0	0	2	0	1	64	0	0	64
Subtotal, Ontario	2	1	17	7	11	837	8	4	21	49	0	1	958	2	1	961
University of Manitoba	0	0	0	0	1	6	98	1	2	2	0	0	110	0	0	110
University of Saskatchewan	0	0	0	1	1	2	2	76	9	8	0	1	100	0	0	100
University of Alberta	0	0	0	1	2	5	0	1	148	5	0	0	162	0	0	162
University of Calgary	1	0	1	0	3	14	0	0	126	8	1	1	155	0	5	160
Subtotal, Alberta	1	0	1	1	5	19	0	1	274	13	1	1	317	0	5	322
University of British Columbia	0	0	2	0	4	19	2	3	5	250	2	1	288	0	0	288
Total	68	11	89	79	650	908	113	85	316	323	4	4	2,650	5	6	2,661

These data exclude enrolment in *Med-P program* at the McGill University.

These data include students promoted into year 1 from *année préparatoire* at the *Université de Montréal*.

Table/Tableau G-18

**Enrolment Status of Students in Canadian Faculties of Medicine by Faculty of Medicine
2017/18**

Type d'inscriptions des étudiants aux facultés de médecine canadiennes selon la faculté de médecine

Faculty of Medicine Faculté de médecine	Enrolled First Time in this Faculty				Continuing Students (Promoted from previous year)	Repeaters ¹ (Same year of study as previous year)			Readmitted after Leave of Absence	Total
	Année Préparatoire	First Year	2nd and Higher Yr. of Study ²	Subtotal, 1st Time		Required to Repeat	Student Option	Subtotal, Repeaters		
Memorial University of Newfoundland	*	80	0	80	238	1	0	1	1	320
Dalhousie University	*	109	7	116	321	6	4	10	3	450
Laval Université	*	226	3	229	624	26	222	248	13	1,114
Université de Sherbrooke	*	203	3	206	583	15	0	15	15	819
Université de Montréal ³	211	82	3	296	1,081	12	1	13	31	1,421
McGill University	*	180	0	180	544	1	0	1	6	731
University of Ottawa	*	164	0	164	486	2	17	19	6	675
Queen's University	*	100	0	100	293	2	2	4	2	399
University of Toronto	*	260	0	260	772	1	15	16	13	1,061
McMaster University	*	203	0	203	407	0	0	0	17	627
Western University	*	170	0	170	509	0	8	8	9	696
Northern Ontario School of Medicine	*	64	0	64	190	2	0	2	2	258
University of Manitoba	*	110	1	111	326	4	3	7	5	449
University of Saskatchewan	*	100	0	100	289	11	4	15	1	405
University of Alberta	*	162	0	162	471	0	2	2	9	644
University of Calgary	*	160	0	160	305	9	4	13	8	486
University of British Columbia	*	288	0	288	865	2	15	17	10	1,180
Total, 2017/18	211	2,661	17	2,889	8,304	94	297	391	151	11,735

¹ The option to prolong study is now available to students in some faculties of medicine. For this reason the category "repeaters" has been split to distinguish those who are required by the faculty of medicine to repeat a year from those who have requested that they prolong their period of study.

² Of the 17 advanced standing admissions in 2017/18, 5 were admitted to above-quota positions under contract with foreign governments or institutions. Transfers from one Canadian faculty of medicine to another are counted as continuing students.

³ Figures for U. de Montréal in 2017/18 include 211 students admitted for the first time into année préparatoire; 82 students admitted directly into year 1. Students promoted from année préparatoire enrolled in year 1 for the first time (211) are included under "continuing students".

Table/Tableau G-19

Enrolment Status of Students in Canadian Faculties of Medicine by Year of Study
2017/18

Type d'inscriptions des étudiants aux facultés de médecine canadiennes selon l'année d'études

<u>Preparatory Year</u>		<u>Année préparatoire</u>	
Enrolled 1st time in this faculty of medicine	211	Inscrit pour la 1ère fois à cette faculté de médecine	
Repeaters/enrolled same year of study as 2016/17	0	Redoublant/inscrit à la même année d'études qu'en 2016/17	
Readmitted after a leave of absence	3	Réinscrit après une période d'absence	
Total, Preparatory Year	214	Total, année préparatoire	
<u>Year 1</u>		<u>1ère Année</u>	
Enrolled 1st time in this faculty of medicine	2,661	Inscrit pour la 1ère fois à cette faculté de médecine	
Continuing/promoted from année préparatoire	209	Continuant/promus de l'année préparatoire	
Repeaters/enrolled same year of study as 2016/17	32	Redoublant/inscrit à la même année d'études qu'en 2016/17	
Readmitted after a leave of absence	14	Réinscrit après une période d'absence	
Total, Year 1	2,916	Total, 1ère année	
<u>Year 2</u>		<u>2e Année</u>	
Enrolled 1st time in this faculty of medicine	0	Inscrit pour la 1ère fois à cette faculté de médecine	
Continuing/promoted from previous year	2,845	Continuant/promus de l'année préparatoire	
Repeaters/enrolled same year of study as 2016/17	270	Redoublant/inscrit à la même année d'études qu'en 2016/17	
Readmitted after a leave of absence	24	Réinscrit après une période d'absence	
Total, Year 2	3,139	Total, 2e année	
<u>Year 3</u>		<u>3e Année</u>	
Enrolled 1st time in this faculty of medicine	16	Inscrit pour la 1ère fois à cette faculté de médecine	
Continuing/promoted from previous year	2,790	Continuant/promus de l'année préparatoire	
Repeaters/enrolled same year of study as 2016/17	38	Redoublant/inscrit à la même année d'études qu'en 2016/17	
Readmitted after a leave of absence	84	Réinscrit après une période d'absence	
Total, Year 3	2,928	Total, 3e année	
<u>Year 4</u>		<u>4e Année</u>	
Enrolled 1st time in this faculty of medicine	1	Inscrit pour la 1ère fois à cette faculté de médecine	
Continuing/promoted from previous year	2,460	Continuant/promus de l'année préparatoire	
Repeaters/enrolled same year of study as 2016/17	53	Redoublant/inscrit à la même année d'études qu'en 2016/17	
Readmitted after a leave of absence	26	Réinscrit après une période d'absence	
Total, Year 4	2,540	Total, 4e année	

Table/Tableau G-20

**First Time Enrolment Status of Students in Canadian Faculties of Medicine by Faculty of Medicine,
Year of Study and Legal Status in Canada**

2017/18

**Étudiants inscrits pour la première fois aux facultés de médecine canadiennes selon la faculté de médecine,
l'année d'études et la situation juridique au Canada**

Faculty of Medicine	First Time, First Year by Legal Status in Canada				New, Advanced Standing			Total, First Time Enrolment (excluding transfers)
	Canadian Citizen	Permanent Resident	Visa ③	Subtotal, first time, first year	from a Canadian medical faculty ②	foreign contracts ③	from other locations ③	
Memorial University of Newfoundland	80	0	0	80	0	0	0	80
Dalhousie University	109	0	0	109	0	5	2	116
Laval Université	222	4	0	226	0	0	3	229
Université de Sherbrooke	202	1	0	203	0	0	3	206
Université de Montréal ①	287	4	2	293	0	0	3	296
McGill University	169	9	2	180	0	0	0	180
University of Ottawa	162	2	0	164	0	0	0	164
Queen's University	97	3	0	100	0	0	0	100
University of Toronto	256	3	1	260	0	0	0	260
McMaster University	199	4	0	203	0	0	0	203
Western University	170	0	0	170	0	0	0	170
Northern Ontario School of	64	0	0	64	0	0	0	64
University of Manitoba	109	1	0	110	0	0	1	111
University of Saskatchewan	99	1	0	100	0	0	0	100
University of Alberta	159	3	0	162	0	0	0	162
University of Calgary	153	3	4	160	0	0	0	160
University of British Columbia	285	3	0	288	0	0	0	288
Total, Canada	2,822	41	9	2,872	0	5	12	2889

1 Numbers for Université de Montréal include 82 students admitted directly into year 1 in 2017/18 and 211 students promoted from année préparatoire in 2017/18.

2 Students admitted with advanced standing who were transfers from another Canadian medical faculty were not first time admissions to the system as a whole, although the students were enrolled for the first time at the faculty of medicine in which they were registered in 2017/18. There were no students who transferred from one Canadian medical faculty to another this year.

3 Of the 17 advanced standing admissions (excluding transfers), 5 were foreign students studying on a student visa, 4 were Canadian citizens, and 8 were permanent residents of Canada.

Total first time enrolment:	2,822	Canadian citizens
(year 1 to year 4 only)	41	Permanent residents
	9	Visa students
	<u>2,872</u>	

Note: These data include 5 first time students one year from graduation enrolled in above-quota positions under contract between the faculty of medicine and a foreign government or institution.

ATTRITION RATES/TAUX D'ABANDON

Table/Tableau G-21

**Attrition (by September 2017) of Students Enrolled in Canadian Faculties of Medicine in 2016/17
by Faculty of Medicine and Year of Study**

**Taux d'abandon (jusqu'en septembre 2017) des étudiants inscrits aux facultés de médecine canadiennes
en 2016/17 selon la faculté de médecine et l'année d'études**

Faculty of Medicine	Year of Study									Total		
	First Year*			Intermediate Years			Final Year			M/H	W/F	T
	M/H	W/F	T	M/H	W/F	T	M/H	W/F	T			
Memorial University of Newfoundland	0	1	1	0	0	0	0	0	0	0	1	1
Dalhousie University	0	0	0	1	1	2	1	0	1	2	1	3
Laval Université	0	0	0	1	1	2	0	3	3	1	4	5
Université de Sherbrooke	2	4	6	1	6	7	0	0	0	3	10	13
Université de Montréal *	4	7	11	3	3	6	0	0	0	7	10	17
McGill University	0	0	0	0	0	0	0	0	0	0	0	0
University of Ottawa	0	0	0	1	0	1	0	0	0	1	0	1
Queen's University	0	0	0	1	0	1	0	0	0	1	0	1
University of Toronto	0	0	0	1	1	2	0	0	0	1	1	2
McMaster University	0	0	0	0	1	1	0	0	0	0	1	1
Western University	0	0	0	0	0	0	0	0	0	0	0	0
Northern Ontario School of Medicine	0	0	0	0	0	0	0	0	0	0	0	0
University of Manitoba	0	0	0	0	0	0	0	0	0	0	0	0
University of Saskatchewan	1	0	1	0	0	0	0	0	0	1	0	1
University of Alberta	0	0	0	0	2	2	0	0	0	0	2	2
University of Calgary	1	0	1	0	0	0	0	0	0	1	0	1
University of British Columbia	0	0	0	3	1	4	0	0	0	3	1	4
TOTAL	8	12	20	12	16	28	1	3	4	21	31	52
All Schools												
Attrition	8	12	20	12	16	28	1	3	4	21	31	52
Enrolment, Sept. 2016**	1289	1843	3132	2603	3074	5677	1257	1632	2889	5149	6549	11698
Attrition as % of enrolment	0.6	0.7	0.6	0.5	0.5	0.5	0.1	0.2	0.1	0.4	0.5	0.4

M/H = Men/Hommes W/F = Women/Femmes T = Total

* First year attrition includes 1 withdrawals from année préparatoire at Université de Montréal.

** First year enrolment data include 217 students enrolled in année préparatoire at U. de Montréal.

Attrition rates were calculated as follows:

- 1) All students enrolled during the 2016/17 academic year and who had definitely dropped out by September 2017 are included, irrespective of reason for drop-out.
- 2) Students who were on leaves of absence during the 2016/17 academic year and who were expected to return to medical studies during the 2016/17 academic year are included if they did not enrol in 2017/18 and the Faculty of Medicine confirmed that they would not be returning at a later date. Students whose leaves of absence were extended, for whatever reason, are not counted as drop-outs.
- 3) Students who were expected to graduate in 2017 and who were later reported on the "List of Graduating Students, 2017" as drop-outs are included in these counts.